



WORLD LEADERSHIP SCHOOL

IMPACT REPORT 2022



2022 SNAPSHOT

Student Travel

833 students and educators have logged more than **1,578 hours** of engagement with local communities across the globe.



"This program expanded my worldview... I now understand different perspectives and experiences more. There is so much that has made me reflect on my own life, and I'm inspired by the conservation efforts we helped with to bring back to my own community."

- Student, Miss Porter's School, Costa Rica Program



\$48,349 raised for community projects and NGO contributions!

"My perception about what it means to be a community has changed so much. I'm inspired by how people here live their lives with so much richness through leaning on each other, taking advantage of the natural beauty around them, and radiating positivity."

- Student, Lakeside School, Puerto Rico Program

Professional Learning

1205 adult learners impacted by WLS Professional Learning from around the world.



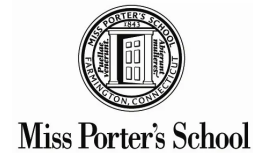
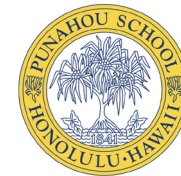
"The work around purpose-driven learning has been very powerful for our school leaders. We've offered workshops for leadership teams, heads of school and even students."

- Alecia Berman-Dry, Association of Independent Schools of Maryland

Appleby College has benefited greatly from 12 years of partnering with World Leadership School to strengthen our faculty professional development program in the areas of global education and student-centered learning. From delivering full faculty presentations, facilitating workshops for all faculty and specific teaching departments, integrating global education pedagogies into new faculty training, and coaching teachers one-on-one, World Leadership School has consistently provided high quality expertise and support to our teachers and administrators.

Rob McGuiness
 Director of Global Education, Appleby College

PARTNERS





MISSION

World Leadership School partners with K-12 schools to reimagine learning and create next-generation leaders. We help schools bring purpose to learning in two main ways: we take students out into the world and coach teachers to bring purpose to learning.

PURPOSE IN LEARNING

THINKING, FEELING, AND DOING

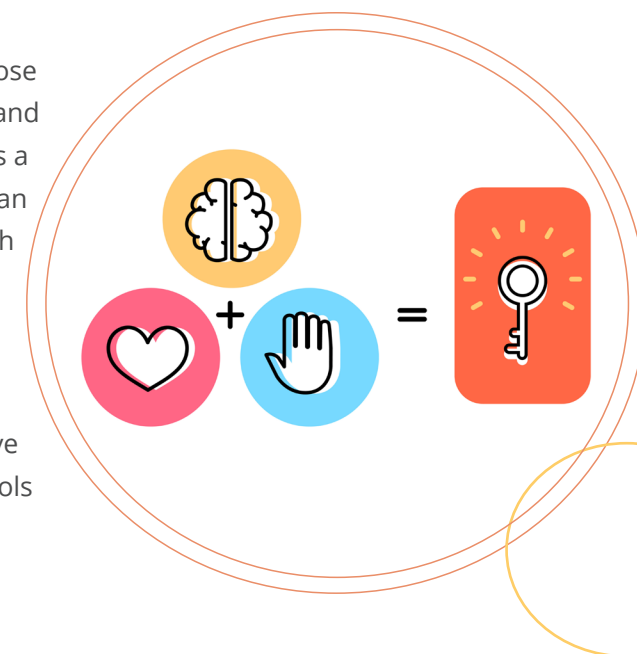
Over the last decade, schools have made a broad shift away from content memorization to skills-based learning. But even competency-based learning can feel meaningless unless it is designed around the humanity of each student. Purpose learning allows students to explore two basic human questions: “Who am I?” and “How do I contribute to something bigger?”

Purpose learning has profound implications for the future of K-12 learning, including how we assess students, organize the school day, divide knowledge into subjects, and define what it means to be a teacher — and a student. In an age of artificial intelligence, where everything that can be automated will be automated, our uniquely human ability to tell stories, make meaning, and follow purpose will be more important

Purpose helps students be **happier, healthier** and **manage stress** more effectively. But only 20 percent of high school students and 10 percent of middle school students are purposeful, according to Stanford’s Youth Purpose Study. We believe that K-12 schools can create visible and intentional strategies that help teachers and students explore, discover and articulate purpose.

Stanford’s Center on Adolescence defines purpose as “a stable intention that is meaningful to self and consequential for the world.” In other words, it’s a core of meaning on the inside that connects to an action on the outside. It can be very simple, such as “to grow and give.”

At World Leadership School, we know we can do better. We help schools pursue deliberate strategies in response to the question we believe is guiding the future of learning: “How can schools help students explore, discover, and articulate purpose?”



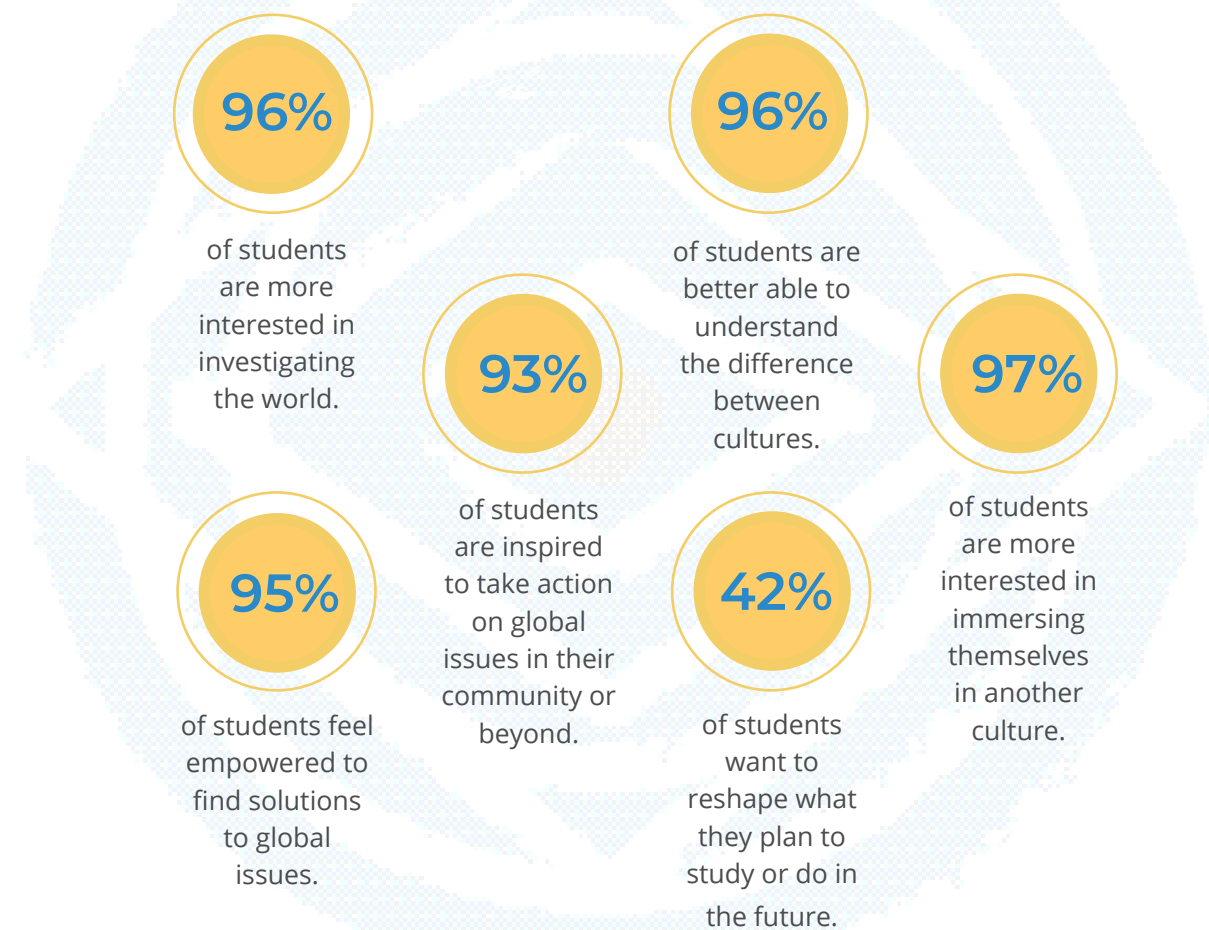
IMPACT ON SCHOOLS

STUDENT PROGRAMMING

Every year WLS works with K-12 schools to design and deliver immersive partnership-based travel programs in Latin America, Africa, Asia and the USA. We see travel as a powerful tool for guiding students towards lives of purpose and helping educators transform classrooms.

On our travel programs, students **disconnect**, **decenter** and **re-envision**. They disconnect from technology and their normal rhythms of life; they become decentered through immersive experiences; and they re-envision their lives by working alongside local students and community leaders.

After a WLS program:



WLS has knowledgeable and well-trained, experienced educators who do a great job getting to know the students while adapting to the needs of the group while traveling. The WLS approach to designing and executing the student experience creates the opportunity for deeper learning and connection.



Sophie Paris
 Director, Institute for Global Education
 Miss Porter's School



The professional experience allowed me to generate new ideas and experiences I could take back to my classroom. It also helped me to recharge.



Faculty participant
 Eastern Shore Professional Learning Travel Program
 Summer 2022

IMPACT ON SCHOOLS

PROFESSIONAL LEARNING & CONSULTING

Professional Learning at World Leadership School helps teachers connect in three basic ways. Teachers first connect to their own professional purpose, then to each other as teammates, and finally to the pedagogies that best meet the needs of their students. By connecting to the “why”, teaching teams explore the “how” and the “what.”

Because we believe educators should be empowered with voice and choice in their own learning journey, WLS offers multiple entry points to learning and growth throughout the year: In-Service Workshops, access to personalized coaching through our Virtual Coaching Institute, Educator Travel programs, conferences and summits, and, Risk Management workshops for educators that travel off campus with students.

Our team offers a variety of **workshops** that help teachers explore purpose and shift toward equitable, learner-centered pedagogies such as Project Based and Purpose Learning. The goal of these workshops is to create an immersive experience where teachers can connect, design, and inspire each other with actionable ideas. Workshops are offered in both an online, virtual setting, and in-person based on the needs and resources of each school.

While our workshops generate key insights and connect educators to the pedagogical “big picture”, our coaching program, called the **Virtual Coaching Institute**, helps teachers take those insights and develop them into programs and learning experiences that help drive school-wide change.



Through coaching, teacher teams work with a WLS coach as they advance along the **WLS Continuum**, which creates an organized work plan to ensure connection and results.

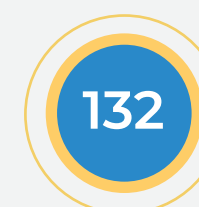
Further supporting our belief about personalized choice in learning, we also offer an annual **K-12 Purpose Summit** in Boulder, CO, where teams gather for an immersive 4-day experience that includes pre- and post-coaching. We also offer a Self-Paced Intro to **Project-Based Learning** Course and, each summer, an educator travel program to a new location around the world. We believe that teachers with the right space and support can transform schools with their energy and ideas around purpose-driven learning.

In the Summer of 2022, WLS also offered the first-ever **Salmon River Program for School Heads**. This unique leadership development program began with a 5-day rafting program and continued with a year of “peer coaching” sessions. The program, which is repeating in 2023, allows leaders to connect, renew, and reflect.

Learning By the Numbers:



We worked in collaboration with **8 state and national Independent School Associations** to provide programming, and enrich the learning of their local educators. This includes the National Association of Independent Schools, Virginia Association of Independent Schools, Association of Colorado Independent Schools, and Independent School Experiential Education Network, among others.



132 Schools in North America were impacted by our professional learning program



We successfully ran our **4th Annual K-12 Purpose Summit** in Boulder, Colorado in the Winter of 2022, which included **60 educators** from **27 different schools** around the country.



100 Educators from around the country participated in multi-school programs we ran, allowing them to connect and learn from our team, and each other.

100% of our participants felt seen and heard during our Educator Travel Program

100% of participants at the 2022 K-12 Purpose Summit said instructional methods allowed them to engage with the content meaningfully

WALKING TOGETHER WITH COMMUNITIES AROUND THE WORLD



World Leadership School's programs are rooted in **responsible** and **sustainable community engagement** theory. We have studied different approaches to community engagement and it guides why and how we interact with our partners. Engagement happens at World Leadership School through partnerships with local communities. These partnerships between schools and local communities are created within the context of their own journeys – this is what we call “walking together.” Our activities and experiences are determined by the community itself. These partnerships look different depending on the needs of the students and the community members. We partner with non-governmental organizations, associations, schools, artisans' collectives, or any other group. In working with private groups in smaller communities, we must be aware of challenging dynamics that exist outside of our partnership. We strive to overcome challenges and avoid the pitfalls of traditional community service work through these partnerships, where community leaders are involved from the beginning.

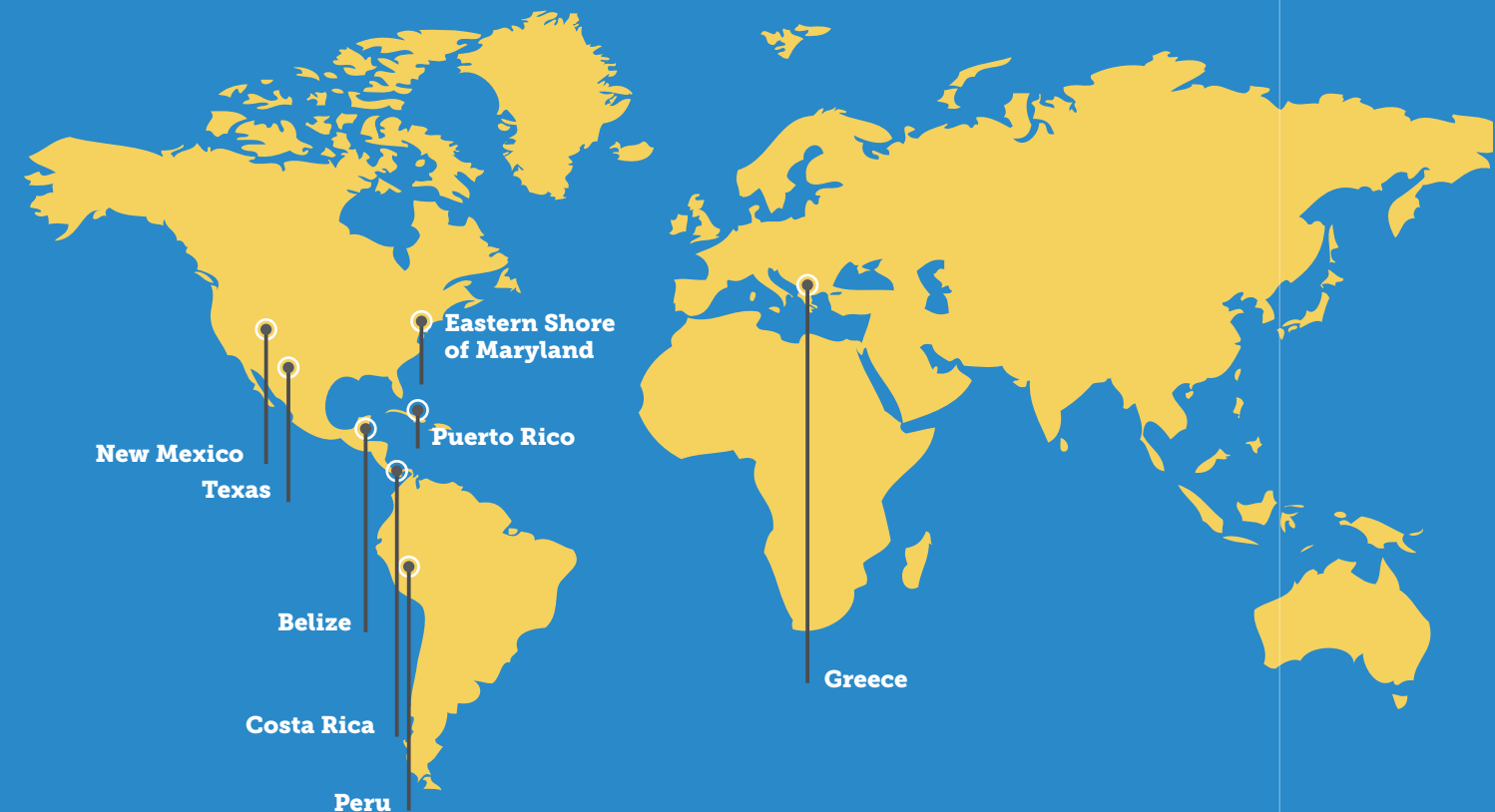
We strive to invest in local leaders by hiring local coordinators and instructors and we source program supplies from our partner communities wherever possible. World Leadership School is also committed to improving the natural environments where we visit through efforts such as reforestation, poverty reduction and long-term education initiatives.



Since 2009 participants have raised over \$700,000 for community projects.

GLOBAL PRESENCE

As World Leadership School emerged from the pandemic in 2022, we began working again over 10 communities across 5 countries. Since 2009 participants have raised over \$700,000 for community contributions that have supported a wide range of social impact projects. Past projects include school buildings in Kenya, a computer lab in Belize, covered walkways and child-sized bathrooms in Costa Rica and traditional Native American ovens in pueblos in New Mexico.



WHO WE ARE

We are a tight-knit team of committed individuals. Together, we have decades of experience around innovative educational practices in the classroom, wilderness and diverse global environments. We are proud to foster students of purpose and enrich lives with our immersive partnership-based travel program. Our **staff** develops and coordinates our travel programs around the world and in the United States as well as coordinates our educator development initiatives. In addition to our director of professional learning, our **teacher coaches** partner with faculty in order to create student-driven, world-connected classrooms. Our **instructors** are amazing, intrepid, humorous, and wise experiential educators. Our **coordinators** live and work near our host communities and nurture the long-term relationships that are the bedrock of the work we do.



// I believe strongly in the power of experiential learning to transform individuals of all ages, and as program leader, I had the privilege of witnessing the curiosity, determination and openness with which these young people approached this adventure. Students were challenged daily to step outside of their comfort zones, confront prior assumptions, break through language barriers and work together as a cohesive unit. They built relationships and were exposed to an incredible array of leadership styles, and were able to learn directly from strong local leaders who are affecting change in their community. //

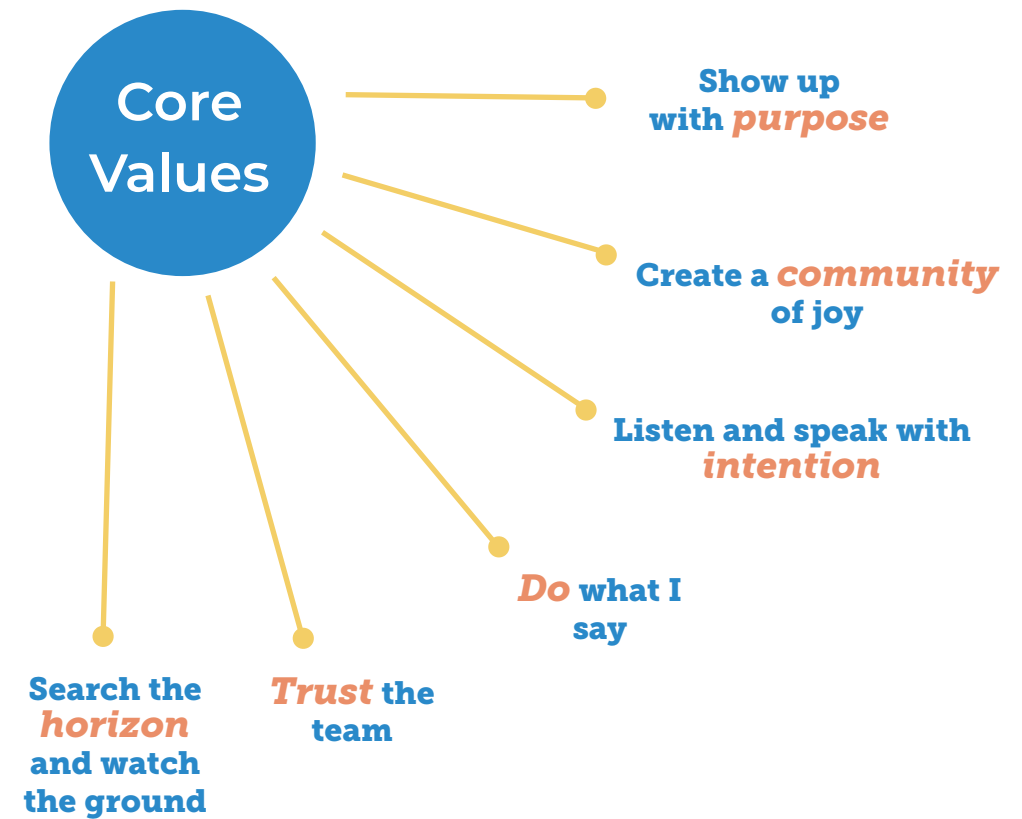
*Meghan Edwards
Assistant Head of Middle School for
Academics and Global Education
La Jolla Country Day School*



World Leadership School exemplifies the highest standards of a B Corp. I have never had the honor of working with a company so human-centered and socially responsible. WLS sells student travel but their team genuinely cares about the communities around the world that they support. WLS does a noble job of striking a balance between serving their clients and supporting the communities around the world. I am so thankful to be able to work with WLS and bring such meaningful and respectful cross cultural experiences to my community here in Sarapiquí, Costa Rica.

Meghan Casey
WLS Costa Rica Coordinator

OUR CORE VALUES



World Leadership School is driven by the mission to “reimagine learning and create next-generation leaders.” We do this by helping schools take students out into the world on immersive, partnership-based travel experiences, and by coaching educators to bring purpose to learning. We believe that K-12 schools should be the ultimate platform for launching children into lives ofr purpose.

Our mission was never more important than during the COVID-19 pandemic, when our travel programs became disrupted. During this time we followed our mission and focused on new ways of working with schools, including virtual immersive travel experiences, online educator classes and modules, and new forms of team coaching.

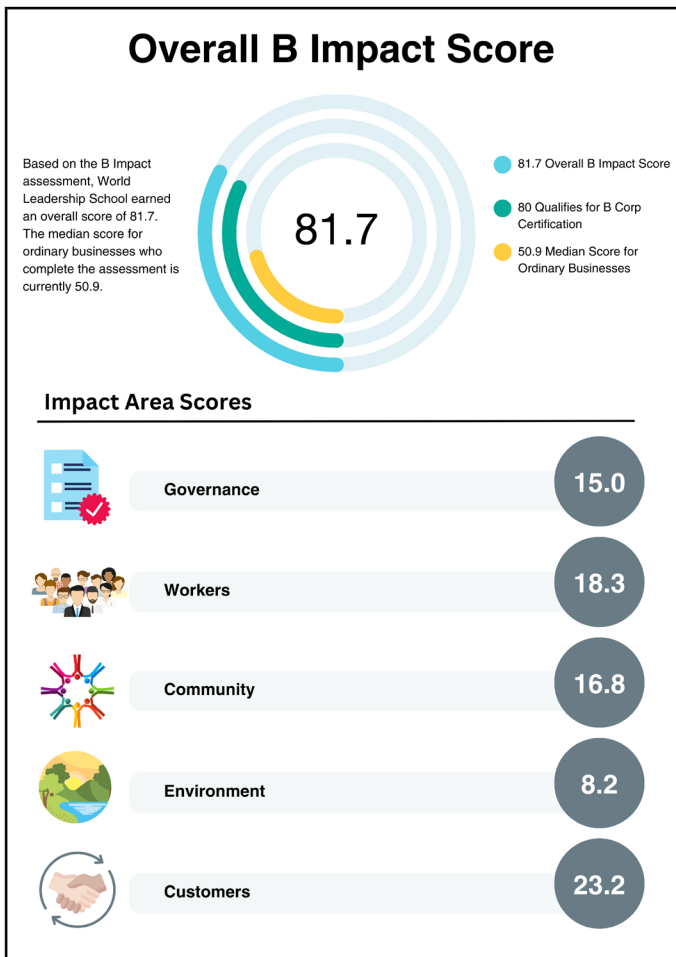
Apart from our mission, our community at World Leadership School are based on our core commitments. The WLS commitments are not performance goals. Rather they are action statements that describe how we want to show up for each other and for our schools.



B-CORPORATION

In addition to being a certified B Corp, WLS took the additional step to switch its status to a Colorado Public Benefit Corp in 2014. The public benefit statute requires that all PBCs assess and report on their overall social and environmental performance, benchmarked against a third-party standard that meets statutory criteria of transparency and credibility.

WLS is a Founding B Corp and since 2017 has gone through the B Impact Assessment (BIA) every two years. We believe that the BIA is the most credible tool we can use to measure our impact on our workers, community, environment and our customers. Every assessment audit has challenged our thinking and given us a process to assess and evaluate the way we are doing things.



“ The WLS program we adopted to deepen our students’ learning aligned with our ongoing global education efforts. Specifically, the program was designed to strengthen our year-long study of renewable energy and sustainability. We greatly valued WLS’s ability to partner with our teachers while providing a professional development opportunity. It has been a fantastic experience, one that we hope to sustain for years to come. WLS’ ability to work with LS students and teachers is phenomenal and I wholeheartedly recommend them. ”

Karina Baum
 Director of Global Education Buckingham Browne & Nichols School, Boston, MA

